

HOSKEN
SITE STEEL

228B Lavarack Avenue,
Pinkenba, Queensland, 4008

Phone: (07) 3260 2084
Fax: (07) 3260 2806

email: info@hoskensteel.com.au
tenders@hoskensteel.com.au

web: www.hoskensteel.com.au

HOSKEN
SITE STEEL
PTY LTD



Artwork & Design by Dan Romeo
DIABLO Design & Graphics

dan@diablodesign.com.au
www.diablodesign.com.au

Hosken Site Steel Pty Ltd
Structured For Success



ALL YOU NEED UNDER ONE ROOF

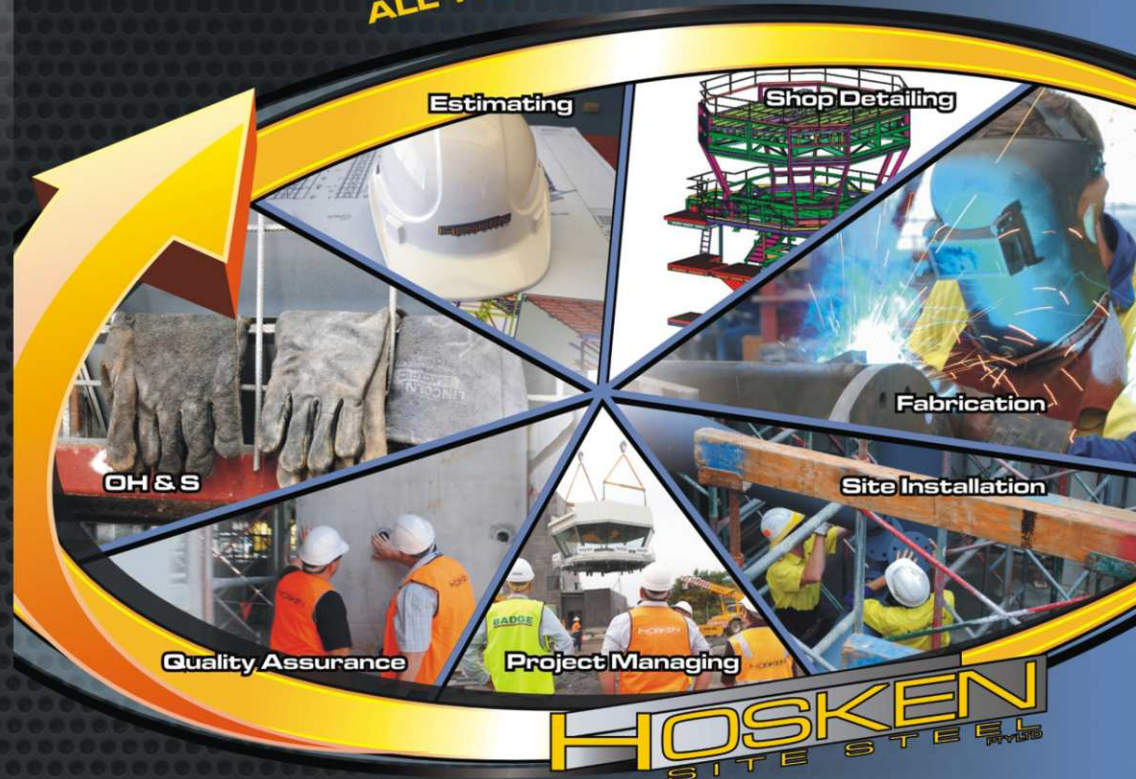
WELCOME TO HOSKEN SITE STEEL

Hosken Site Steel (HSS) is well aware that our brand can only be developed and maintained by having long and successful client relationships. In order to create these relationships, we understand that all projects whether large or small are treated alike and that every client's expectations are achieved for their individual requirements.

HSS have structured our business to become one of the leading 'end to end' fabricators in the State. We offer the full package from estimating to drafting, then onto fabrication and site installation being a complete service carried out and controlled by the **HSS** Team.

This gives our clients the level of comfort knowing that no project can be influenced by outside resources. It also enables **HSS** the level of control and flexibility to ensure significant programme or milestone dates are achieved for all projects.

Throughout the enclosed Company Profile we will outline in brief detail how the mentioned aspects of our business unit can be of help to any client regardless of their size.

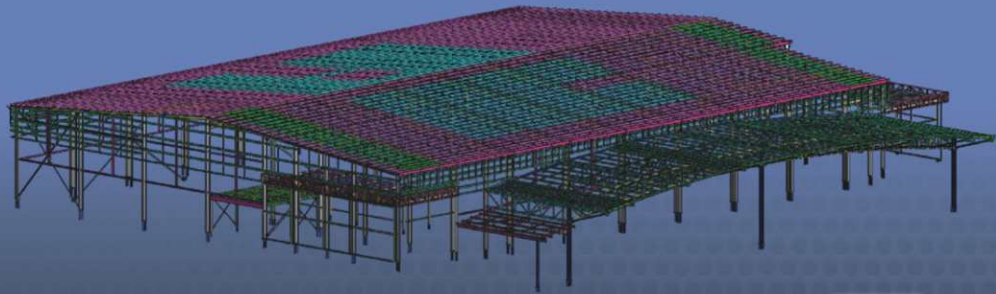


HOSKEN
SITE STEEL



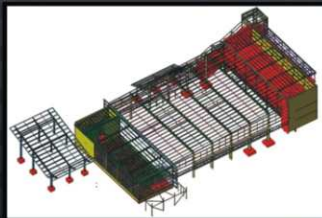
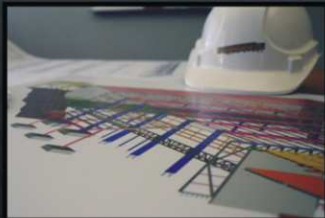
HSS - STRUCTURED FOR SUCCESS

HSS - STRUCTURED FOR SUCCESS

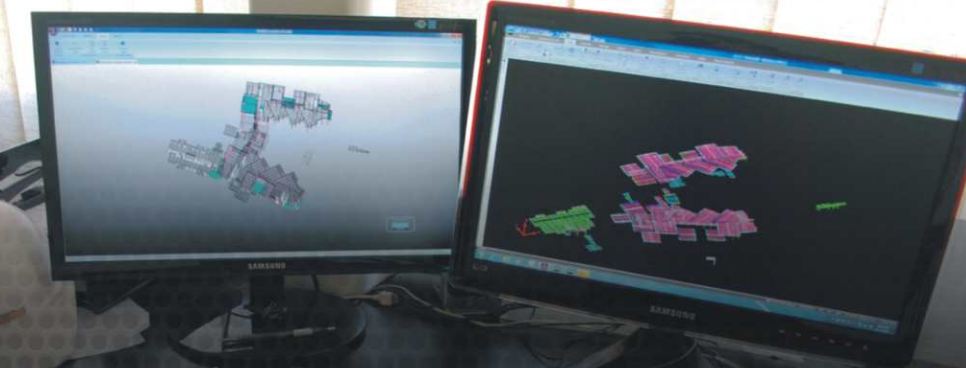


DRAFTING

HSS is a multi-disciplined 'end to end' drafting, fabrication and rigging company that utilises the latest 3D technology and systems to produce fast and accurate structural detail drawings to enhance our project's sustainability and success.



Our drafting team offer's clients a full range of services that can be accessed in a variety of ways to suit their unique needs. These services include design and drafting for structural steel projects with ongoing site support to the very end. Our modelling system allows clients to view a 3D model of the structure before fabrication and erection, promoting the benefits of appropriate programming and methodology of critical path elements in construction.



The implementation of **Stru-MIS**, a complete fabrication management system specifically designed for the advanced fabricator. **Stru-MIS** galvanised our 'end to end' structural steel supply chain by adding a key link between our drafting team and the front line. **Stru-MIS** supports our 3D modelling software and allows our team access to critical project information produced at every stage of the contract, improving productivity and traceability in the steel fabrication chain.



At **HSS** our company's greatest asset is its staff. Having our core group of senior detailers in-house offers invaluable first hand support to our front line team, producing the best possible result for our client and their project.



FABRICATION

HSS take great pride in delivering quality and precise structural steel. With proven experience in Government, Hospitality, Mining, Commercial and Industrial infrastructure our company understands the enduring needs of our client's time frames and programmes in the ever-changing market.

Structural Steel passes through various operations during its course of fabrication. Efficient fabrication is a key component throughout each project and this is guided by management, through drafting to procurement then onto our experienced team of fabricators.

On handover from drafting to fabrication, the **Stru-Mis** management system genuinely takes effect, allowing the capability of segregating complete projects into multiple phases whilst maintaining complete traceability. This has proven to be a great facet with our clients, offering versatility in the installation and programming of projects at various stages.



HSS - STRUCTURED FOR SUCCESS



Logistics is also a significant factor behind each project and is a vital element that primarily co-ordinates all structural steel components from fabrication to site. **HSS** can accommodate any finishing schedule from Hot Dip Galvanising to specialised paint systems ensuring our final product meets all relevant Australian standards and quality requirements, ready for delivery to site.



With management support, the proficient and positive attitude of the **HSS** fabrication team has allowed our company to successfully tackle some of the most intricate structures designed by leading engineers and architects across the country, providing a stable platform for future projects.



HSS - STRUCTURED FOR SUCCESS

SITE INSTALLATION

HSS understand that site installation is a key element of the service we provide. Each project has its own set of circumstances that requires varying adjustments to the way we go about the site installation.

Prior to commencing on site the allocated project team consisting of a Project Manager, Draftsman and Site Supervisor are involved in a briefing. This briefing is structured to clearly outline our client's requirements, erection and safety procedures, interfacing with other contractors, site unloading etc. to ensure every detail has been addressed. We believe that taking the time to plan out the installation prior to reaching site benefits all parties involved in the project. Assuring **HSS** have outlined all expectations, guarantee's a positive project outcome for our client.

HSS site installation crews are directly employed by the company with the relevant agreements and compliances in place to safeguard efficient project installation without disputes or delays. **HSS** are continually monitoring current legislation and training staff to ensure our team members have the relevant licence's, accreditations and the necessary experience required to complete the tasks for their particular project.

Throughout the installation, **HSS** Site Supervisor will liaise with the client's site representative to ensure all facets of the construction programme are being monitored and achieved. Our Project Manager's regularly visit the site's to provide our site staff with the required support and maintain all expectations and obligations.

At the completion of every project, **HSS** project management team complete an internal company project sign off procedure. This process ensures that we have completed the works in accordance with the project drawings, specifications and all other relevant documentation.



OCCUPATIONAL HEALTH & SAFETY

At **HSS** we are committed to ensuring that all workers and visitors are entitled to a safe and harmonious workplace free of injury and illness caused by unsafe work practices. It is our main objective in complying with relevant OHS Legislation, statutory requirements, codes of practice, Australian Standards that relate to the practices at the workplace.

As an employer **HSS** recognises that in its functions it faces the additional workload in providing a safe environment for its employees to conduct works both on site and in the workshop. **HSS** provide the resources, training and expertise assisting its employees whatever the environment maybe, for the insurance that all works conducted meet OHS obligations.

The importance to reduce illness or injury within the workplace is set to the highest standard aiming to achieve the ultimate goal of zero harm. **HSS** have implemented a strategic reporting programme that collect's data from within the Business Unit which is used to measure performance against objectives and targets that have been set to ensure the improvement aimed at eliminating work related risks/hazards causing injury or illness.

HSS has set defined responsibilities and tasks to its personnel to assist management in ensuring the successful implementation and maintenance of OHS within the workplace whilst meeting objectives, obligations and targets.

HSS - STRUCTURED FOR SUCCESS



HOSKEN
HOSKEN
SAFE
EVERY
NIGHT

HSS - STRUCTURED FOR SUCCESS